



Snows Ride, Windlesham

£900,000



Snows Ride, Windlesham, Surrey

This detached bungalow sits on a secluded plot of over 1/3 of an acre with 4 bedrooms, the master has an en-suite and there is also a separate family bathroom. The property has a large kitchen and lounge/dining room, with a south-facing garden and swimming pool. Recently re-decorated throughout, it is offered for sale with no onward chain and has scope to extend, subject to planning permission.

FEATURES

- No onward chain
- 1858 sq.ft
- Plot of approx. 0.38 acres
- Scope to extend subject to planning permission
- Within 2 miles of Sunningdale station for trains to London and Reading
- Easy access to junction 3 of the M3
- Village location

ACCOMMODATION

- Entrance hall
- Cloakroom
- Living/dining room
- Kitchen/breakfast room
- Utility room
- Master bedroom with en-suite
- Three further bedrooms
- Family bathroom

OUTSIDE

- Front, side and rear gardens
- Outside swimming pool
- Garage with separate toilet
- Gravel parking area

EPC RATING

D

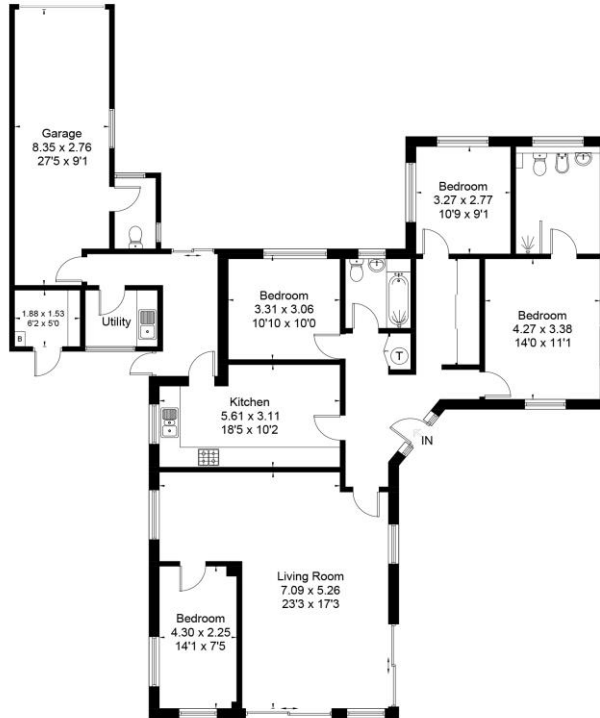
LOCAL AUTHORITY/COUNCIL TAX

Surrey Heath – Band G





Approximate Area = 172.6 sq m / 1858 sq ft (Including Garage)
Including Limited Use Area (0.1 sq m / 1 sq ft)



Ground Floor

Surveyed and drawn in accordance with the International Property Measurement Standards (IPMS 2: Residential)
fourwalls-group.com 322734

Disclaimer: We wish to inform prospective purchasers that we have prepared these sales particulars as a general guide. We have not carried out a detailed survey, nor tested the services, appliances and specific fittings. Room sizes are approximate and rounded; they are taken between internal wall surfaces and therefore include cupboards / shelves, etc. Tenant fees apply, see our notification of tenant costs.

Postcode for sat nav: GU20 6LA

